

Newfoundland and Labrador Snowmobile Federation

ROCK THE TRAILS



*30
YEARS
OF
SUCCESS*



This year marks a significant milestone for the Newfoundland and Labrador Snowmobile Federation as we celebrate our 30th anniversary. Over the past three decades, the NLSF has witnessed remarkable growth, and a passionate community dedicated to the sport of snowmobiling in our province.

With winter just around the corner, we're excited to see you back on the trails, ready to make fresh tracks and create new memories. Here's to the next 30 years!

Annual General Meeting **2024**

A big thank you to all club members and guests who attended our AGM held on October 6. We had great discussions around trail development and future plans.

Current 2024-25 Board of Directors

- Chair – Bob Blundon
- Vice Chair – Shellie Reid
- Directors – Chad Colbourne, Jason Pond, Glenn Green, Bruce Yates, Blair Sparkes, Rick O'Brien, Phyllis Randell

Thank you to our dedicated board members for their continued commitment and leadership. We look forward to another successful year ahead!



An advertisement for Big Stop Restaurant. At the top, the logo "IRVING BIG STOP Restaurant" is displayed. Below the logo, the text "Warm up with a homestyle meal on any trail you travel" is written in a white, serif font. In the center, a white plate is filled with a homestyle meal consisting of two sunny-side-up eggs, a pile of golden-brown hash browns, several strips of bacon, and slices of ham. At the bottom of the advertisement, a yellow banner contains the text "Stop by any of our locations:" followed by a list of locations: "Clareville | Deer Lake | Gander | Goobies | Donovan's (Mount Pearl)". Below the banner, the website "irvingoil.com" and social media icons for Facebook, Instagram, and Twitter are shown.

2023-24 Kevin Sweetland Volunteer of the Year

Roy Higdon, President of the Terra Nova Trailriders, was named the 2023/24 Kevin Sweetland Volunteer of the Year. He received the award at our AGM on October 6.

An invaluable member of the Terra Nova Trailriders, Roy has devoted countless hours to the club. Whether it's repairing bridges, installing culverts and signs, maintaining trails, preparing warm up shelters, or keeping the public updated on trail conditions and grooming, his dedication and hard work has made a significant impact in the snowmobiling community.

Please join us in congratulating Roy, and if you see him around, be sure to thank him for all his hard work!

CELEBRATING EXCELLENCE



Western Sno-Riders and Rugged Edge Receives CCSO Awards

This past season has been particularly noteworthy for the NLSF, with Western Sno-Riders (WSR) being awarded as Snowmobile Club of the Year and Rugged Edge as Snow-Related Business of the Year. Additionally, WSR have been inducted into the Snowmobile Hall of Fame, celebrating their outstanding contributions to maintaining

and prompting safe snowmobiling practices in our province. They received this esteemed recognition at the International Snowmobile Hall of Fame induction banquet in Eagle River, WI on September 28.

(Continued on page 4 and 5)



- Ensure your snowmobile is working properly.
- Avoid riding along power lines and watch for guy wires.
- Steer clear of high snow banks around overhanging power lines.
- Proceed slowly near utility workers, vehicles or equipment.
- Stay off the ice, including reservoirs and rivers near hydroelectric dams where ice is unstable.



WSR Named CCSO Club of the Year and Inducted Into Snowmobile Hall of Fame

The Western Sno-Riders (WSR) has been a pillar of Newfoundland's snowmobiling community for 27 years, since their establishment on January 31, 1997. With 10 core volunteers and 20+ event volunteers, the club continues to grow through social media and word-of-mouth recruitment, emphasizing the value of volunteer work and community pride in their well-maintained trail system.

Maintaining over 400 kilometers of trails, WSR has invested more than \$100,000 in trail improvements, including culvert replacements, brush cutting, grading and warm up shelter renovations. The club is also dedicated to promoting snowmobile safety and trail responsibility through social media, seminars, and partnerships with local organizations such as Search and Rescue. Their community involvement is strong, as seen in popular events like Race on the Rock and the Shiver Shack Challenge, which brings people together while raising awareness for good causes.

Recognized for their fundraising efforts, WSR recently raised over \$15,000 for a new rescue unit to support backcountry snowmobiling safety. With a commitment to supporting local businesses and youth, they continue to play a key role in the growth of snowmobiling while contributing to the local economy. Congratulations to Western Sno-Riders on all of their achievements!



Rugged Edge Awarded CCSO Snow-Related Business of the Year

Rugged Edge, owned by Craig Borden and his partner Melissa, has been a big part of Western Newfoundland's snowmobiling community for 16 years, since opening its doors on December 1, 2008. Craig, a lifelong snowmobiler with deep ties to the sport, recognized the need for a one-stop shop for outdoor enthusiasts in the region which became the inspiration for Rugged Edge.

The business has been an active supporter of organized snowmobiling from day one, particularly through Craig's long-standing involvement with

the Western Sno-Riders club and the Newfoundland and Labrador Snowmobile Federation. Rugged Edge supports local snowmobiling events like "Race on the Rock" and often provides resources like loaner snowmobiles or ATV's to the local club for trail work. They provide financial and in-kind donations to other clubs and charities across the island as well as many hours of volunteer time.

Snowmobile rentals, guided tours, accessories and repair services, are among the offerings they provide. Their

business plays a pivotal role in promoting snowmobiling through community engagement, fundraising, and partnerships with local tourism organizations. Their dedication to safety and community involvement has made them a recognized leader in Newfoundland's snowmobiling industry.

Rugged Edge's commitment to both the sport and their local community makes them deserving of Snow-Related Business of the Year. Congratulations to Craig, Melissa and the Rugged Edge Team!



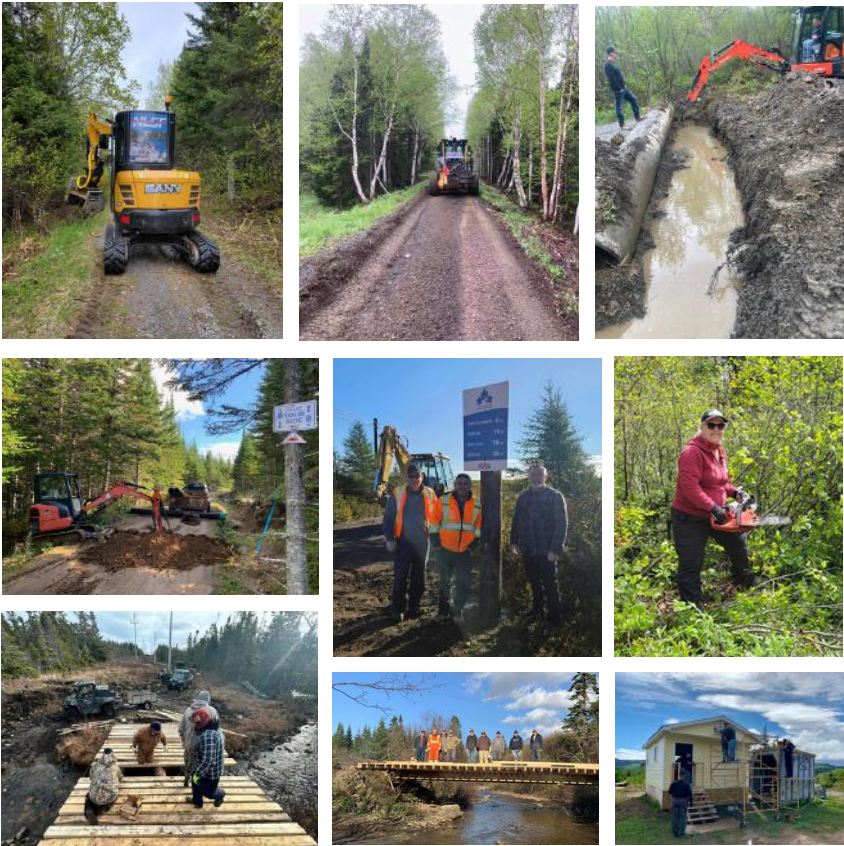
Pinotti

PROUD TO BE YOUR TRAIL GROOMING PARTNER IN NEWFOUNDLAND AND LABRADOR

REACH OUT TO YOUR LOCAL SALES REP
The Shop Industrial
tsi@theshopindustrial.com
(800) 663-3724

SCAN THIS CODE TO LEARN MORE!

CLUBS AT WORK



Our trails are designed to be enjoyed by everyone. In conjunction with our dedicated clubs, we work year-round to build, upgrade and maintain our extensive trail network for all outdoor enthusiasts including ATV users, bikers, horseback riders, and walkers. We're committed to sharing the beauty of our trail network with the entire community.

Every snowmobile trail pass purchased helps support our clubs and volunteers, who work tirelessly to deliver the best possible experience for all trail users. Additionally, our clubs offer trail support stickers for purchase during the off-season.



TRACK INC
WWW.TRACKINC.COM
 Arctic Transportation & Snow Grooming Solutions

Experience our equipment firsthand!
Contact us
 for demos & event support!



Partnering with SNB in support of snowmobiling throughout New Brunswick



Tucker SNO-CAT

(819) 300-2586



MOGUL Master MULTI-BLADE PLANERS



SNOW RABBIT



INFO@TRACKINC.COM



Stay away...

SEE THE WIRES.

Electricity is everywhere you go, even if you're off the beaten path. Look for hazards that can be harder to see in winter conditions. Be cautious of guy wires and avoid power line rights-of-way.
newfoundlandpower.com/safety | 1-800-663-2802

WHENEVER. WHEREVER.
We'll be there.

NEWFOUNDLAND POWER
A FORTIS COMPANY

October Online Trail Pass Giveaway Winner

Everyone who purchased a trail pass online in October were entered into a draw to win a Garmin Tread GPS. Thank you to all our early trail pass supporters, and a big congratulations to Gary, our lucky winner!

NSL
7 Wellen Drive
www.nsl.org

ULTIMATE WINTER GETAWAY CONTEST

WIN THE SNOWMOBILE TRIP OF A LIFETIME FOR YOU AND A BUDDY!

2 Days Snowmobiling in Western Newfoundland
"The Rockies of the East"

3 Nights at The Chalet at Cormack

Get Decked Head to Toe in New CKX Gear


Make a purchase at Driven Powersports between October 15 & December 15th and automatically get 5 contest entries!

Get 5 Bonus Entries When You Share & Tag Us
Get 10 Bonus Entries For Any CKX Purchase

DRIVEN Canada's Powersports Website | **CKX** | The Chalet at Cormack

For full details visit:
www.drivenpowersports.ca/contest

Download the NLSF Trail Map App



Plan and share trips with friends, check out the latest grooming updates, view nearby points of interest and much more!

The basic version is FREE and offers access to many features with or without cell service. Or download the Pro Version for a subscription fee of \$4.99/year.

GET IT ON
Google Play

Download on the
App Store

FREEBIE Friday

Take part in our early bird giveaway contest to kick off the sledding season! We are giving away NLSF merch every Friday until the end of early bird on Dec 15. *Featuring our 30th anniversary swag!*

To Enter

- Purchase a NLSF trail pass online at nlsfpermits.com, or at any of our 80 vendors across the island.
- Post a photo of your trail pass in the original pinned post on our Facebook page.
- The earlier you buy, the more chances you'll have to win! Early Bird rate available until December 15.

Tim Hortons®



THE SHOP INDUSTRIAL INC.
 112 FIELDING ROAD, LIVELY, ON P3Y 1L5
 1-800-663-3724
www.theshopindustrial.com
tsi@theshopindustrial.com

The Shop Industrial Inc. manufacturer of **MOGUL Master**
"The Grooming Professionals"






Thank you to our
"Friends of Snowmobiling"
for your continued support



WM. Perry Trucking
Deer Lake, NL
709-636-1650
709-635-2506



Merry Christmas!

FROM NLSF STAFF AND BOARD

Newfoundland & Labrador Snowmobile Federation
7 Wellon Drive
Deer Lake, NL A8A 2G6
1 (709) 635-4395

info@nlsf.org |  